

8-19-2004

## AS220: In the Galleries August 19, 2004

Melanie Ducharme

Emily Schwartz

Tetpwav Tetpwav

Infinite Proof

Follow this and additional works at: [http://digitalcommons.ric.edu/as220\\_root](http://digitalcommons.ric.edu/as220_root)



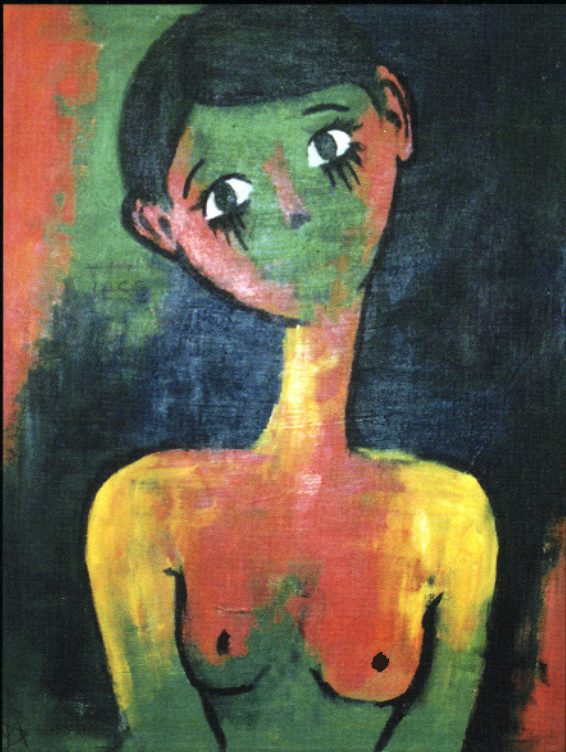
Part of the [Arts and Humanities Commons](#)

---

### Recommended Citation

Ducharme, Melanie; Schwartz, Emily; Tetpwav, Tetpwav; and Proof, Infinite, "AS220: In the Galleries August 19, 2004" (2004).  
*AS220 Digital Archive*. Book 201.  
[http://digitalcommons.ric.edu/as220\\_root/201](http://digitalcommons.ric.edu/as220_root/201)

This Article is brought to you for free and open access by Digital Commons @ RIC. It has been accepted for inclusion in AS220 Digital Archive by an authorized administrator of Digital Commons @ RIC. For more information, please contact [kayton@ric.edu](mailto:kayton@ric.edu).



tetpwav[aip]

# AS220

115 Empire St. Providence RI 02903  
401.831.9327 www.as220.org

## IN THE GALLERIES

Hours 10am-5pm Monday-Friday  
12pm-5pm Saturday

### CAFE GALLERY

Melanie Ducharme  
*paintings*

### OPEN WINDOW

Emily Schwartz  
*mixed media*

### OPENING RECEPTION

August 19, 2004  
Gallery Night Providence  
5pm-9pm

### UPSTAIRS GALLERY

*Infinite Proof: An East-West*  
Printmaking Collaborative

### SECOND FLOOR HALLWAY

Tetpwav  
*digital images/paintings*

left: Melanie Ducharme, "Voiceless"  
right: Tetpwav, "Yonselnouye"

AS220 is funded in part by the RI State Council on the Arts and the Wallace Foundation