

6-20-2002

## AS220: In the Galleries June 20-July 26, 2002

James Power

Amber Morrison

Teddy Lee

Follow this and additional works at: [http://digitalcommons.ric.edu/as220\\_root](http://digitalcommons.ric.edu/as220_root)



Part of the [Arts and Humanities Commons](#)

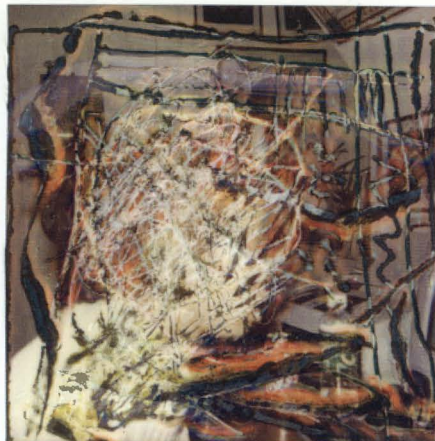
---

### Recommended Citation

Power, James; Morrison, Amber; and Lee, Teddy, "AS220: In the Galleries June 20-July 26, 2002" (2002). *AS220 Digital Archive*. Book 195.

[http://digitalcommons.ric.edu/as220\\_root/195](http://digitalcommons.ric.edu/as220_root/195)

This Article is brought to you for free and open access by Digital Commons @ RIC. It has been accepted for inclusion in AS220 Digital Archive by an authorized administrator of Digital Commons @ RIC. For more information, please contact [kayton@ric.edu](mailto:kayton@ric.edu).



**AS220**

June 20 – July 26

*from left*  
James Power,  
Teddy Lee,  
Amber Morrison

# AS220

115 Empire Street | Providence RI 02903  
401-831-9327 | [www.as220.org](http://www.as220.org)

---

## In the Galleries

---

### June 20 – July 26, 2002

---

*cafe gallery*

**James Power**

paintings

**Amber Morrison**

mixed media

*upstairs gallery*

**Teddy Lee**

Polaroids and paintings

**opening reception**

Gallery Night Providence

Thursday June 20, 5–9pm

**gallery hours**

Mon–Sat, noon to 5pm

*Shop the **Empire Expo** gallery store during normal gallery hours!*

---

AS220 is funded in part by the Rhode Island State Council on the Arts and the Lila Wallace-Reader's Digest Fund