

10-8-1995

## AS220: In the Galleries October 8- October 29, 1995

Kryst'l

Scott

Jay

Follow this and additional works at: [https://digitalcommons.ric.edu/as220\\_root](https://digitalcommons.ric.edu/as220_root)



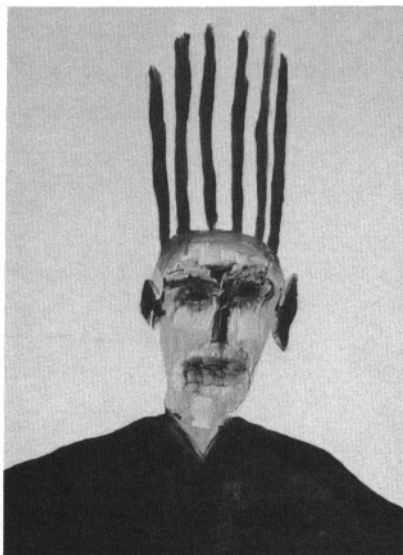
Part of the [Arts and Humanities Commons](#)

---

### Recommended Citation

Kryst'l, Scott, and Jay, "AS220: In the Galleries October 8- October 29, 1995" (1995). *AS220 Digital Archive*. 1850.  
[https://digitalcommons.ric.edu/as220\\_root/1850](https://digitalcommons.ric.edu/as220_root/1850)

This is brought to you for free and open access by Digital Commons @ RIC. It has been accepted for inclusion in AS220 Digital Archive by an authorized administrator of Digital Commons @ RIC. For more information, please contact [digitalcommons@ric.edu](mailto:digitalcommons@ric.edu).

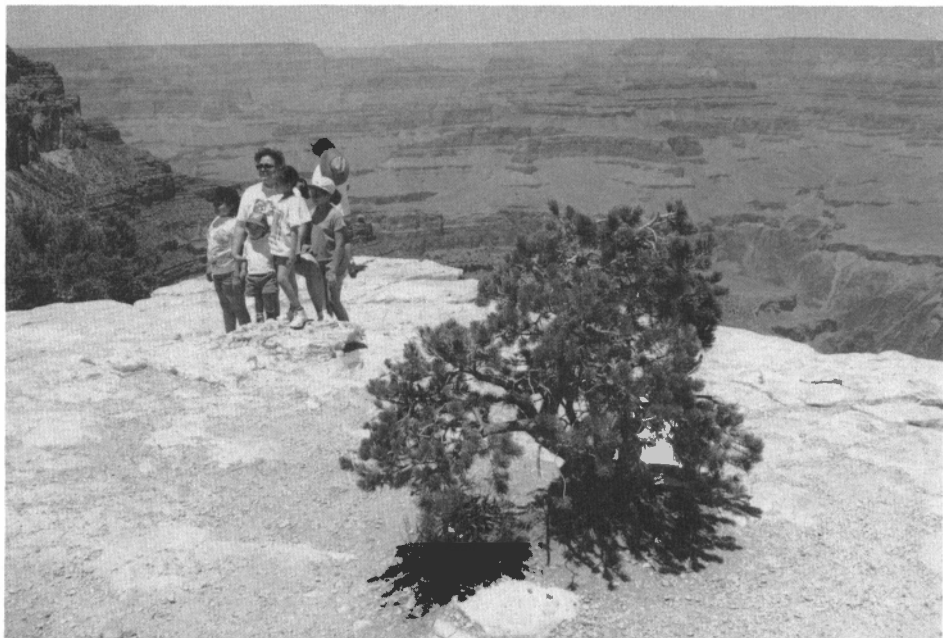


**Jay Clifford**



**Kryst'l Arnold**

**AS220**  
October 1995



**Scott Lapham**

# AS220

# In the Galleries

NON-PROFIT CENTER FOR THE ARTS  
115 EMPIRE STREET  
PROVIDENCE RI 02903

NON-PROFIT ORG.  
US POSTAGE  
**PAID**  
PROVIDENCE, RI  
PERMIT NO 1764

## October 8-29

Opening: Sunday, October 8, 4-6 pm

Upstairs Gallery

**Kryst'l Arnold** paintings  
**Scott Lapham** photographs

In the Cafe

**Jay Clifford** paintings

*Note:* **New Gallery Hours**

Mon-Fri 11am-4pm, Saturdays 1-4pm, closed Sunday

Partial funding provided by the Rhode Island State Council on the Arts

