

6-4-1994

AS220: In the Galleries June 4-26, 1994

Branden Bushnell

Shelley Stout

John Peck

Follow this and additional works at: https://digitalcommons.ric.edu/as220_root

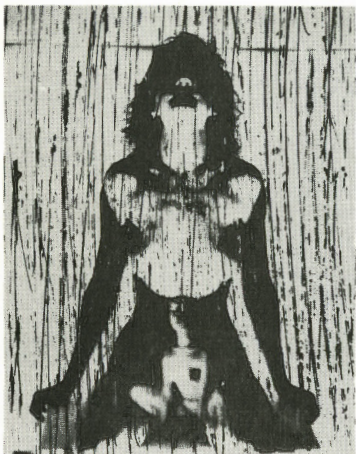


Part of the [Arts and Humanities Commons](#)

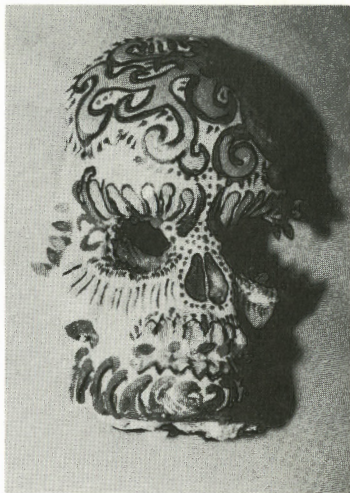
Recommended Citation

Bushnell, Branden; Stout, Shelley; and Peck, John, "AS220: In the Galleries June 4-26, 1994" (1994). *AS220 Digital Archive*. 283.
https://digitalcommons.ric.edu/as220_root/283

This Article is brought to you for free and open access by Digital Commons @ RIC. It has been accepted for inclusion in AS220 Digital Archive by an authorized administrator of Digital Commons @ RIC. For more information, please contact digitalcommons@ric.edu.



Branden Bushnell



Shelley Stout



John Peck

AS220

IN THE GALLERIES

NON-PROFIT ORG.

U.S. POSTAGE

PAID

PROVIDENCE, RI

PERMIT No. 1764

JUNE 4 THRU JUNE 26

OPENING SUNDAY, JUNE 4TH, 4 TO 6PM

UPSTAIRS

John "Mad Peck" Peck

&

Shelley Stout

Branden

Bushnell

DOWNSTAIRS

GALLERY HOURS: TUESDAY THRU FRIDAY 11AM - 5PM / SATURDAYS & SUNDAYS 12PM - 4PM

**AS220 IS LOCATED IN DOWNTOWN PROVIDENCE, ONE BLOCK UP FROM TRINITY REP THEATRE
AND THE PROVIDENCE PUBLIC LIBRARY**

AS220 • 115 EMPIRE ST. PROVIDENCE, RI 02903 • 454-7445 • NON PROFIT CENTER 4 THE ARTS