

11-6-1994

AS220: In the Galleries November 6-27,1994

Rebecca Brenner

Delve Delve

Follow this and additional works at: https://digitalcommons.ric.edu/as220_root



Part of the [Arts and Humanities Commons](#)

Recommended Citation

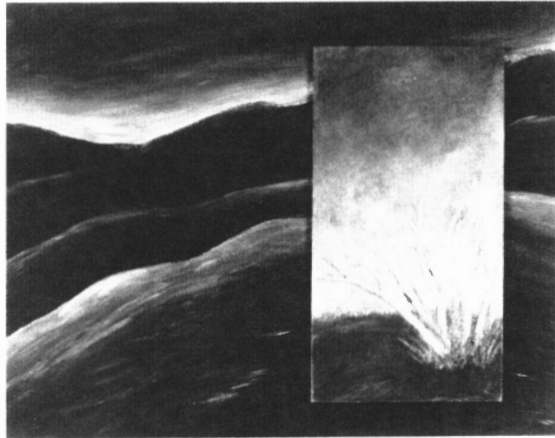
Brenner, Rebecca and Delve, Delve, "AS220: In the Galleries November 6-27,1994" (1994). *AS220 Digital Archive*. 246.
https://digitalcommons.ric.edu/as220_root/246

This Article is brought to you for free and open access by Digital Commons @ RIC. It has been accepted for inclusion in AS220 Digital Archive by an authorized administrator of Digital Commons @ RIC. For more information, please contact digitalcommons@ric.edu.

RHODE ACCESS TO THE ARTS ISLAND

Rebecca Brenner

CHICKEN
BREAST
QUARTERS
\$2.29 



in the hallway
Hudson St. Mkt.
Deli Signs



Delve

AS220

In the Galleries

NON-PROFIT ORG.

US POSTAGE

PAID

PROVIDENCE, RI

PERMIT NO 1764

November 6 - 27

OPENING - Sunday, Nov. 13

4-6PM

U P S T A I R S

**Rebecca Brenner
& Delve**

mixed media

Very Special Arts

Rhode Island

multi-media

group show

D O W N S T A I R S

Gallery Hours

Mon-Fri 11AM-4PM

S/S 1PM-4PM

AS220 NON-PROFIT CENTER FOR THE ARTS 115 EMPIRE STREET PROVIDENCE RI 02903 (401) 454-7445