

6-17-2004

## AS220: In The Galleries June 17-July 10, 2004

Kenny Schultz

Ulick Mahoney

Jyll Ethier

Marcella Marcella

Follow this and additional works at: [https://digitalcommons.ric.edu/as220\\_root](https://digitalcommons.ric.edu/as220_root)



Part of the [Arts and Humanities Commons](#)

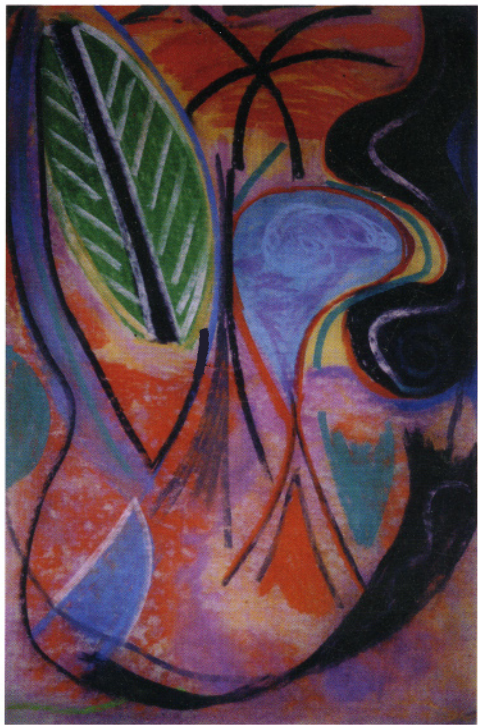
---

### Recommended Citation

Schultz, Kenny; Mahoney, Ulick; Ethier, Jyll; and Marcella, Marcella, "AS220: In The Galleries June 17-July 10, 2004" (2004). *AS220 Digital Archive*. 220.

[https://digitalcommons.ric.edu/as220\\_root/220](https://digitalcommons.ric.edu/as220_root/220)

This Article is brought to you for free and open access by Digital Commons @ RIC. It has been accepted for inclusion in AS220 Digital Archive by an authorized administrator of Digital Commons @ RIC. For more information, please contact [digitalcommons@ric.edu](mailto:digitalcommons@ric.edu).



# AS220

115 Empire St. Providence RI 02903  
401.831.9327 [www.as220.org](http://www.as220.org)

**IN THE GALLERIES** June 17-July 10

Hours 11am-5pm Monday-Friday  
12pm-5pm Saturday

**CAFE GALLERY**

Kenny Schultz

**UPSTAIRS GALLERY**

Ulick Mahoney

**OPEN WINDOW**

Jyll Ethier

**SECOND FLOOR HALLWAY**

Marcella

**OPENING RECEPTION**

June 17 2004  
Gallery Night Providence  
5pm-9pm

left: Kenny Schultz  
right: Ulick Mahoney

AS220 is funded in part by the RI State Council on the Arts and the Wallace Foundation