

5-20-2004

## AS220: In the Galleries May 20-June 12, 2004

Peter Karpick

Christina Amato

Kate Telford

Curt Stump

Follow this and additional works at: [https://digitalcommons.ric.edu/as220\\_root](https://digitalcommons.ric.edu/as220_root)



Part of the [Arts and Humanities Commons](#)

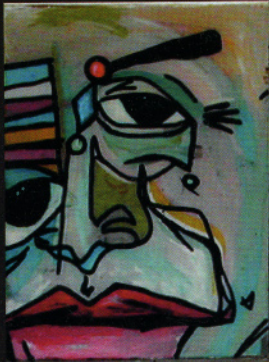
---

### Recommended Citation

Karpick, Peter; Amato, Christina; Telford, Kate; and Stump, Curt, "AS220: In the Galleries May 20-June 12, 2004" (2004). *AS220 Digital Archive*. 219.

[https://digitalcommons.ric.edu/as220\\_root/219](https://digitalcommons.ric.edu/as220_root/219)

This Article is brought to you for free and open access by Digital Commons @ RIC. It has been accepted for inclusion in AS220 Digital Archive by an authorized administrator of Digital Commons @ RIC. For more information, please contact [digitalcommons@ric.edu](mailto:digitalcommons@ric.edu).



# AS220

115 Empire St. Providence RI 02903

401 831 9327 [www.as220.org](http://www.as220.org)

**In the Galleries** May 20-June 12 2004

**Hours** 11am-5pm Mon-Fri

12-5pm Sat

**cafe gallery**

Peter Karpick

**upstairs gallery**

Christina Amato

**open window**

Kate Telford

**2nd floor hallway**

Curt Stump

**opening reception**

May 20, 2004

5pm-9pm

Left: Chrisina Amato

Right: Peter Karpick

AS220 is funded in part by the Rhode Island State Council on the Arts  
and The Wallace Foundation