

8-19-2004

AS220: In the Galleries August 19, 2004

Melanie Ducharme

Emily Schwartz

Tetpwav Tetpwav

Infinite Proof

Follow this and additional works at: https://digitalcommons.ric.edu/as220_root

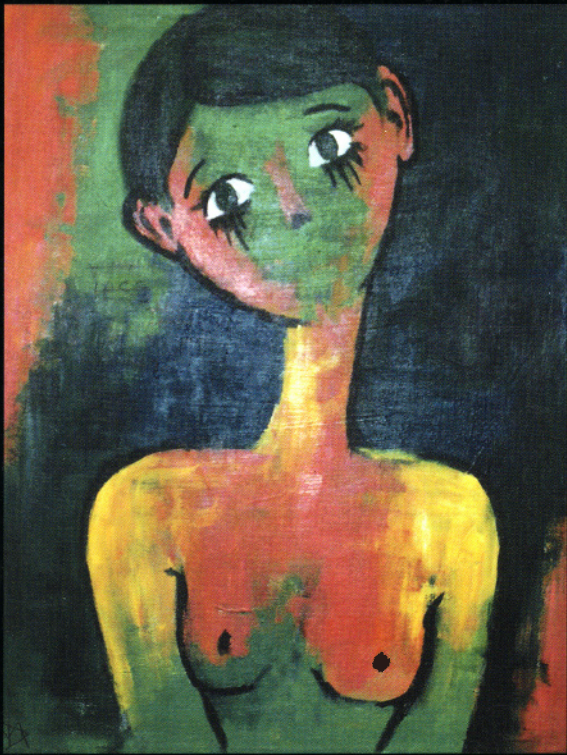


Part of the [Arts and Humanities Commons](#)

Recommended Citation

Ducharme, Melanie; Schwartz, Emily; Tetpwav, Tetpwav; and Proof, Infinite, "AS220: In the Galleries August 19, 2004" (2004).
AS220 Digital Archive. 201.
https://digitalcommons.ric.edu/as220_root/201

This Article is brought to you for free and open access by Digital Commons @ RIC. It has been accepted for inclusion in AS220 Digital Archive by an authorized administrator of Digital Commons @ RIC. For more information, please contact digitalcommons@ric.edu.



tetpwav[aip]

AS220

115 Empire St. Providence RI 02903
401.831.9327 www.as220.org

IN THE GALLERIES

Hours 10am-5pm Monday-Friday
12pm-5pm Saturday

CAFE GALLERY

Melanie Ducharme
paintings

OPEN WINDOW

Emily Schwartz
mixed media

OPENING RECEPTION

August 19, 2004
Gallery Night Providence
5pm-9pm

UPSTAIRS GALLERY

Infinite Proof: An East-West
Printmaking Collaborative

SECOND FLOOR HALLWAY

Tetpwav
digital images/paintings

left: Melanie Ducharme, "Voiceless"
right: Tetpwav, "Yonselnouye"

AS220 is funded in part by the RI State Council on the Arts and the Wallace Foundation