

6-20-2002

AS220: In the Galleries June 20-July 26, 2002

James Power

Amber Morrison

Teddy Lee

Follow this and additional works at: https://digitalcommons.ric.edu/as220_root

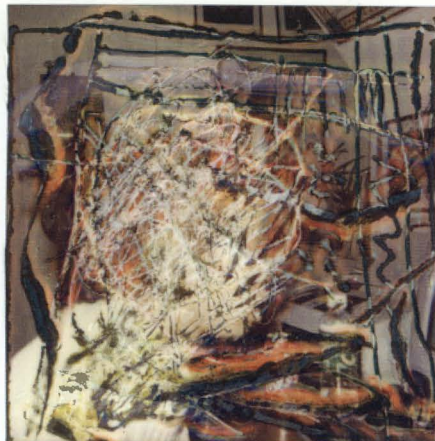


Part of the [Arts and Humanities Commons](#)

Recommended Citation

Power, James; Morrison, Amber; and Lee, Teddy, "AS220: In the Galleries June 20-July 26, 2002" (2002). *AS220 Digital Archive*. 195.
https://digitalcommons.ric.edu/as220_root/195

This Article is brought to you for free and open access by Digital Commons @ RIC. It has been accepted for inclusion in AS220 Digital Archive by an authorized administrator of Digital Commons @ RIC. For more information, please contact digitalcommons@ric.edu.



AS220

June 20 – July 26

from left
James Power,
Teddy Lee,
Amber Morrison

AS220

115 Empire Street | Providence RI 02903
401-831-9327 | www.as220.org

In the Galleries

June 20 – July 26, 2002

cafe gallery

James Power

paintings

Amber Morrison

mixed media

upstairs gallery

Teddy Lee

Polaroids and paintings

opening reception

Gallery Night Providence

Thursday June 20, 5–9pm

gallery hours

Mon–Sat, noon to 5pm

*Shop the **Empire Expo** gallery store during normal gallery hours!*

AS220 is funded in part by the Rhode Island State Council on the Arts and the Lila Wallace-Reader's Digest Fund