

6-21-2001

## AS220: In The Galleries June 21-July 21, 2001

John Kotula

Carlos Pedro

Terry Burns

Follow this and additional works at: [https://digitalcommons.ric.edu/as220\\_root](https://digitalcommons.ric.edu/as220_root)



Part of the [Arts and Humanities Commons](#)

---

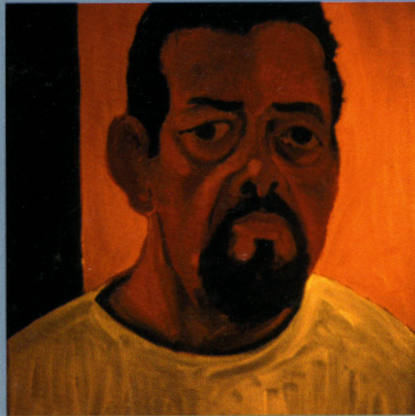
### Recommended Citation

Kotula, John; Pedro, Carlos; and Burns, Terry, "AS220: In The Galleries June 21-July 21, 2001" (2001). *AS220 Digital Archive*. 154.  
[https://digitalcommons.ric.edu/as220\\_root/154](https://digitalcommons.ric.edu/as220_root/154)

This Article is brought to you for free and open access by Digital Commons @ RIC. It has been accepted for inclusion in AS220 Digital Archive by an authorized administrator of Digital Commons @ RIC. For more information, please contact [digitalcommons@ric.edu](mailto:digitalcommons@ric.edu).

**AS220**

JUN 21 – JUL 21



*clockwise from top left*

John Kotula

Terry Burns

Carlos Pedro

# AS220

115 Empire Street | Providence RI 02903  
401-831-9327 | [www.as220.org](http://www.as220.org)

---

## In the Galleries

---

### June 21 - July 21, 2001

---

*cafe gallery*

**John Kotula**

paintings

**Carlos Pedro**

photographs

*upstairs gallery*

**Terry Burns**

collage

**opening reception**

Gallery Night Providence

Thursday June 21

and July 19 5-9pm

**gallery hours**

Tues-Sat, noon to 5pm

---

Shop the **Empire Expo** gallery store during normal gallery hours!

---

AS220 is funded in part by the Rhode Island State Council on the Arts and the Lila Wallace-Reader's Digest Fund